

# ROUTE PLANNING ON THE WEB

Responsive timetable information – anytime and anywhere

**HAFAS.webapp offers the perfect web-based solution for distributing timetable information to your customers. Whether your customers use a desktop PC, tablet or smartphone, our responsive application automatically adjusts to fit perfectly to any screen size.**

HAFAS.webapp is a web-based front end that makes travel information easy to understand. The core of the application revolves around the timetable information and provides departure and arrival boards as well as trip planning. The intuitive and accessible design has numerous features such as integrated real-time and disruption information, tariffs, occupancy forecasts and intermodal connection information.

HAFAS.webapp can be styled to align perfectly with your corporate design, feel free to select colors, icons and logos! All data and information shown in HAFAS.webapp is delivered by HAFAS.engine, making timetable updates automatically available in the application.

HAFAS.webapp can be displayed as a separate page, or integrated directly into your website. Additional options include using our Web Widgets to make jumping into the application from other webpages easy and seamless.

## VARIOUS FEATURE OPTIONS

HAFAS.webapp offers transport companies a large selection of different feature options that can be added to the basic functions. Some examples include:

- » Disruption / traffic information
- » Line search
- » Line-based timetables
- » Push alerts
- » Tariff/Pricing information
- » Live Map
- » Comparison of environmental impact between modes
- » Widget generator

## RESPONSIVE DESIGN

Our front end automatically adapts to a wide variety of display sizes and devices. HAFAS.webapp can be used on stationary computers, laptops, tablets and smartphones – always with a clear usability and consistent style.

## ACCESSIBLE DESIGN

Our HAFAS.webapp is also easily accessible to users with limited sensory capacities and motor skills (WCAG 2.1, Level AA).



## OUR REFERENCES

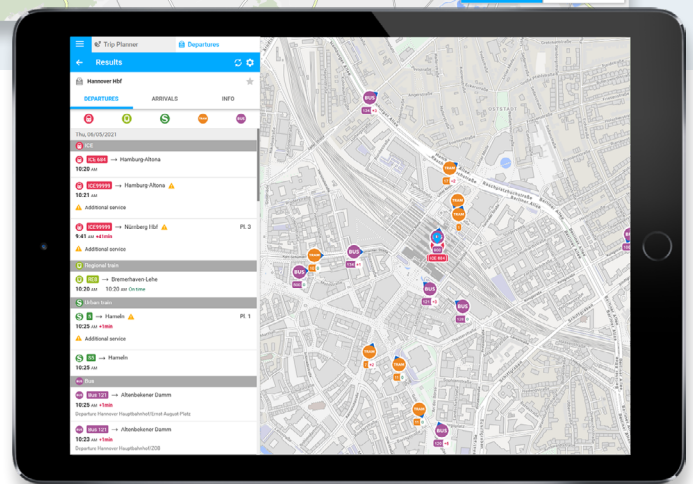


| Time     | Departure | On time | CO2         |
|----------|-----------|---------|-------------|
| 10:03 AM | 10:07 AM  | On time | 1.75 kg CO2 |
| 10:04 AM | 10:18 AM  | On time | 1.71 kg CO2 |
| 10:13 AM | 10:17 AM  | On time | 2.42 kg CO2 |
| 10:33 AM | 10:37 AM  | On time | 1.75 kg CO2 |
| 10:34 AM | -         | -       | -           |



HAFAS.webapp shows intermodal connections clearly. The timetable data is updated in real time and provides information for possible delays. One of the many additional functions is the display of the environmental impact of the selected connections.

The departure overview shows all the departures at one stop or station. By means of the live map, users can track the positions and movements of individual buses or trains.



We make mobility as easy as it gets: For passengers and for transport providers. Our software solutions ensure that passengers get from A to B comfortably and seamlessly – from trip planning, reservations, passenger communication and mobile ticketing to comprehensive MaaS solutions and On-Demand-Services. We support transport providers with fleet, disruption and data management, timetabling and live dispatching tools. We are: Siemens Mobility, Hacon, Sqills, eos.uptrade, Bytemark and Padam Mobility.